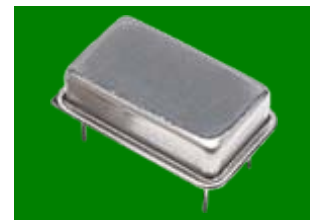


Voltage Controlled Clock Oscillator Unit 14pin DIP-Full Size HCMOS/TTL



Features

- Standard 14 pin Dip Metal Package
- Metal 14Pin DIP, Welding, 20.4 x 12.8 x 5.08
- 3.3V/5.0V Operation
- Low Cost
- Rohs Compliant

Electrical Specifications

Frequency Range	1.000 ~ 200.000		MHz
Frequency Stability	±100 ~ ±25		PPM Max
Aging Per Year	±5		
Operating Temperature Range	Standard	0 ~ +70	°C
	Extended	-40 ~ +85	
Storage Temperature Range	-55 ~ +125		
Input Voltage	3.3 ±10%	5.0 ±10%	V
Control Voltage	1.65 ±1.65	2.50 ±2.00	
Input Current	50		mA Max
Pulling Range	±50 ~ ±130		ppm min
Output Voltage	0 Level (Vol)	10%	Vdd Max
	1 Level (Voh)	90%	Vdd Min
Output Symmetry (Duty Cycle)	Standard	40 ~ 60	%
	Tight	45 ~ 55	
Output Load	HCMOS-TTL/15pF or 10TTL		
Rise & Fall Time	10		ns Max
Start Up time	10		ms Max
Linearity	10		%

Rise / Fall time

- 1MHz ≤ F ≤ 20MHz : 10ns max
- 20MHz < F ≤ 40MHz : 8ns max
- 40MHz < F ≤ 80MHz : 5ns max
- 80MHz < F ≤ 200MHz : 10ns max (multi)

Temperature stability is inclusive of all Conditions : Calibration Tolerance at +25 °C, frequency stability over the operation temperature range , supply voltage, supply voltage change, output load change, shock, vibration, and 1st year aging at +25 °C.

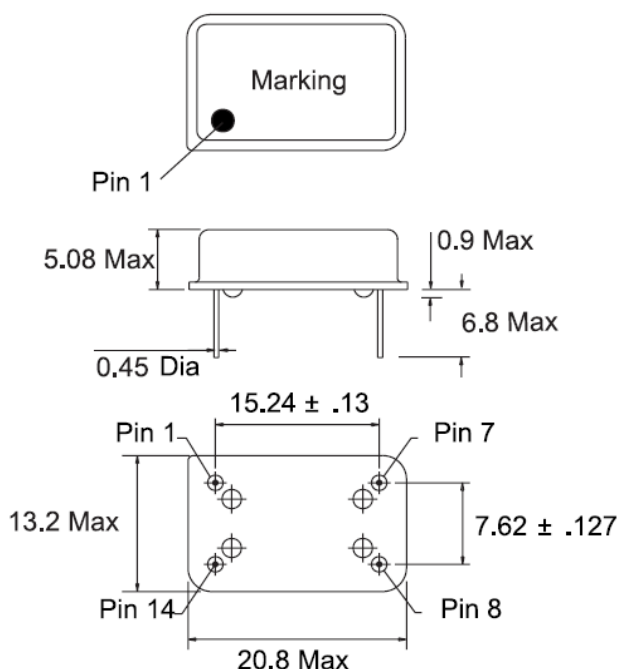
WDV14H Series

Part Numbering System

Type	Frequency Stability (PPM)		Supply Voltage (Vdd)		Frequency (MHz)	Duty Cycle (*1)		Extended Temp. (*1)	Pulling Range (ppm min)	
WDV14H	10	± 100	50 33	+ 5.0 ±10% + 3.3 ±5%	0.252 to 150.000	T	45/55%	EXT	50	±50
	05	± 50							80	±80
	025	± 25							100	±100
									130	±130

Example : WDV14H10-50-24.576-100, WDV14H05-33-50.000-T-EXT-50, WDV14H025-33-32.000-EXT-100

Mechanical Outline



Pin	Connection
1	V control
4	Ground
5	Output
8	Vcc

14 pin DIP Package Weld Metal package
(Dimensions are millimeters)

- Notes:
- 1 - Standard Duty Cycle and Temperature Range do not need to be included in Part Number description.
 - 2 - Product is shipped in ESD Plastic Tubes. Each tube contains 20 pieces.
 - 3 - Specification subject to change without notice.